

Prime Retail Land in the Indian Hills

Improvement District

+/-1.48 Acres

FOR SALE

928 Mica Drive
Carson City, Nevada



KYLE EIGENMAN

775.412.7844

keigenman@primarycre.com

Lic: B.1002302.LLC

TIMOTHY DAYNER

775.688.9525

tdayner@primarycre.com

Lic: S.0178329

Primary CRE

This information furnished has been obtained from sources we deem reliable and is submitted subject to errors, omissions and changes. Although PRIMARY CRE has no reason to doubt its accuracy, we do not guarantee it. All information should be verified by the recipient prior to lease, purchase, exchange or execution of legal documents.

PRIMARYCRE.COM

FOR SALE

928 Mica Drive

Carson City, Nevada

PHOTOS



KYLE EIGENMAN

775.412.7844

keigenman@primarycre.com

Lic: B.1002302.LLC

TIMOTHY DAYNER

775.688.9525

tdayner@primarycre.com

Lic: S.0178329



PRIMARY CRE

Primary CRE

This information furnished has been obtained from sources we deem reliable and is submitted subject to errors, omissions and changes. Although PRIMARY CRE has no reason to doubt its accuracy, we do not guarantee it. All information should be verified by the recipient prior to lease, purchase, exchange or execution of legal documents.

PRIMARYCRE.COM

FOR SALE

928 Mica Drive

Carson City, Nevada

Parcel Map



Property Features

+/-1.48 ACRES of Commercial Retail Land ready to develop.

PARCEL NUMBERS 1420-07-720-002, 1420-07-703-001, 1420-07-703-002

Asking Price \$900,000 No seller financing available

THE PROPERTY Located on the prime corner of Mica Drive and Hwy 395 in the Indian Hills Improvement District in Carson City NV . This parcel is ideal for the development of a commercial retail business. Utilities are available on site and is level topography. Phase 1 and survey available upon request.

ZONED Vacant—Commercial.

MARKET In the Indian Hills Improvement District of Carson City the Capital of Nevada. It is adjacent to the Indian Hills Shopping Center and just South of major supercenters Clear Creek Plaza and Carson Valley Plaza. Major tenants include Home Depot, Target, Walmart, Costco, and many other big box tenants. Other neighbors are Bodines Casino, Sierra Lutheran High School, and Sunridge Golf Course. It is a growing residential population.

WEST COAST LOCATION with direct access to US-395 the main thoroughfare through Carson City and 35 Miles South of Reno, NV providing direct access to Sacramento and San Francisco to the west and Salt Lake City to the east. The site is located less than 40 minutes from the Reno Tahoe International Airport.



PRIMARY CRE

Primary CRE

This information furnished has been obtained from sources we deem reliable and is submitted subject to errors, omissions and changes. Although PRIMARY CRE has no reason to doubt its accuracy, we do not guarantee it. All information should be verified by the recipient prior to lease, purchase, exchange or execution of legal documents.

KYLE EIGENMAN

775.412.7844

keigenman@primarycre.com

Lic: B.1002302.LLC

TIMOTHY DAYNER

775.688.9525

tdayner@primarycre.com

Lic: S.0178329

PRIMARYCRE.COM

FOR SALE

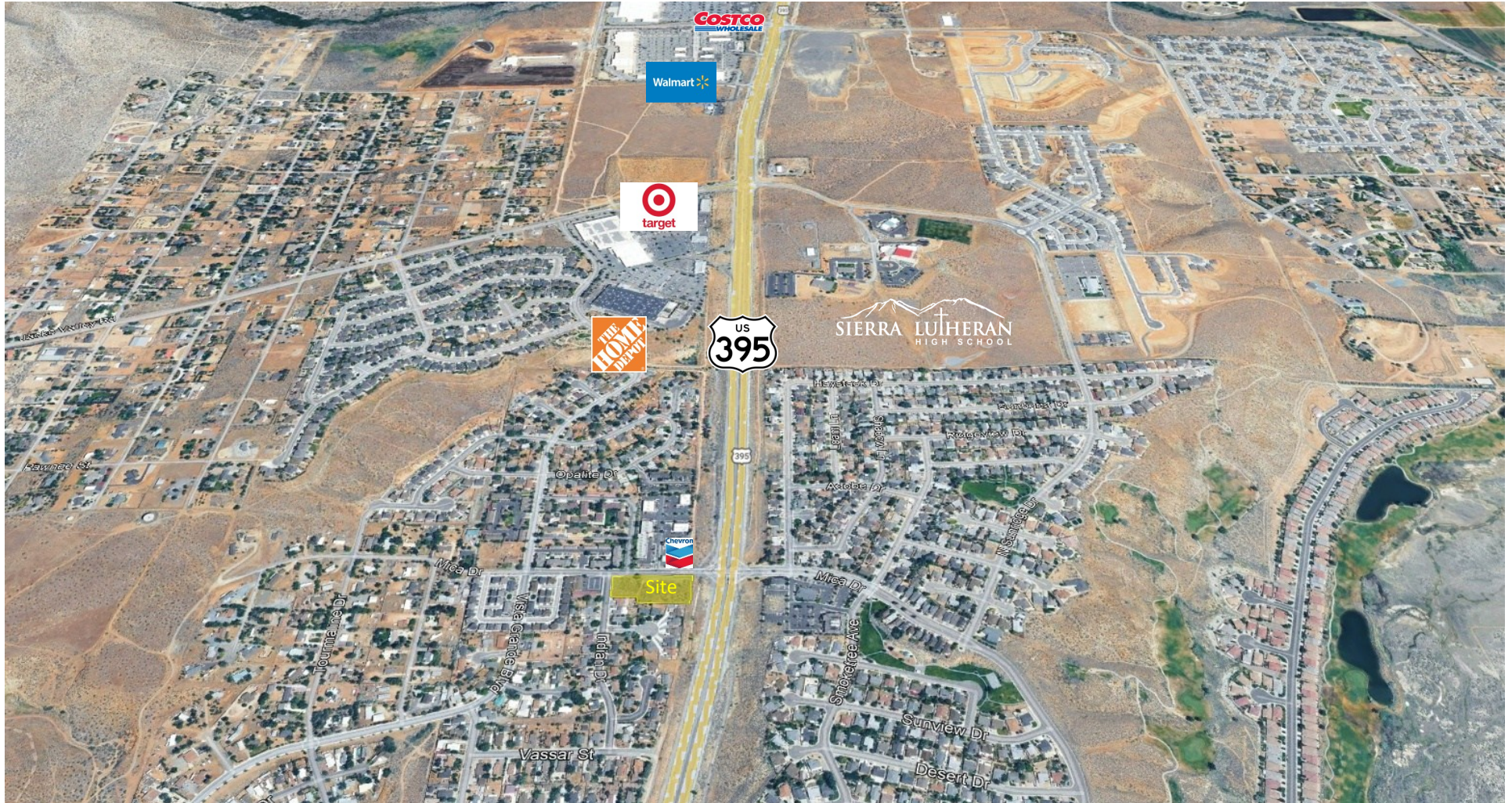
928 Mica Drive

Carson City, Nevada



PRIMARY CRE

Aerial



Primary CRE

This information furnished has been obtained from sources we deem reliable and is submitted subject to errors, omissions and changes. Although PRIMARY CRE has no reason to doubt its accuracy, we do not guarantee it. All information should be verified by the recipient prior to lease, purchase, exchange or execution of legal documents.

PRIMARYCRE.COM



PRIMARY CRE



About Primary CRE

In 2019 Kyle P. Eigenman and Timothy S. Dayner founded Primary CRE. With almost 50 years of combined experience with large corporate commercial real estate firms, Eigenman and Dayner had the vision of integrating the most professional service, the highest quality of standards, and helping match the right people with the right properties.

Our expansive network enables us to open doors for our clients on all sides of the property equation. We make it a point to be involved and stay involved throughout all stages of the real estate process. We'll listen to you and we will guide you every step of the way, whether you are looking to buy, sell, lease, or manage your property.

Contacts:

Kyle P. Eigenman

Broker | Principal

+1 775 412 7844

keigenman@primarycre.com

Lic. B.1002302.LLC

Timothy S. Dayner

Executive Advisor | Principal

+1 775 688 9525

tdayner@primarycre.com

Lic. S.0178329